

WE VALUE



YOUR HOME



Fidlers Orchard, Harwell
£2,200 PCM



Available from August 2026, un-furnished for long term let

Situated within an executive development, this impressive home offers well-balanced accommodation ideal for modern family living. At the heart of the property is a stylish kitchen/dining room, fitted with a range of integrated appliances and designed to create a sociable space for everyday life.

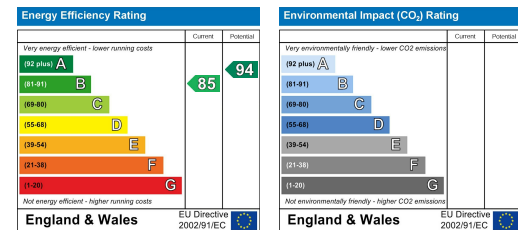
The accommodation includes four double bedrooms, with the principal bedroom benefiting from an en-suite shower room, alongside a separate office/study providing flexibility for home working.

Externally, the property enjoys a landscaped rear garden, ideal for both relaxing and entertaining, while a detached garage offers additional storage and practicality.



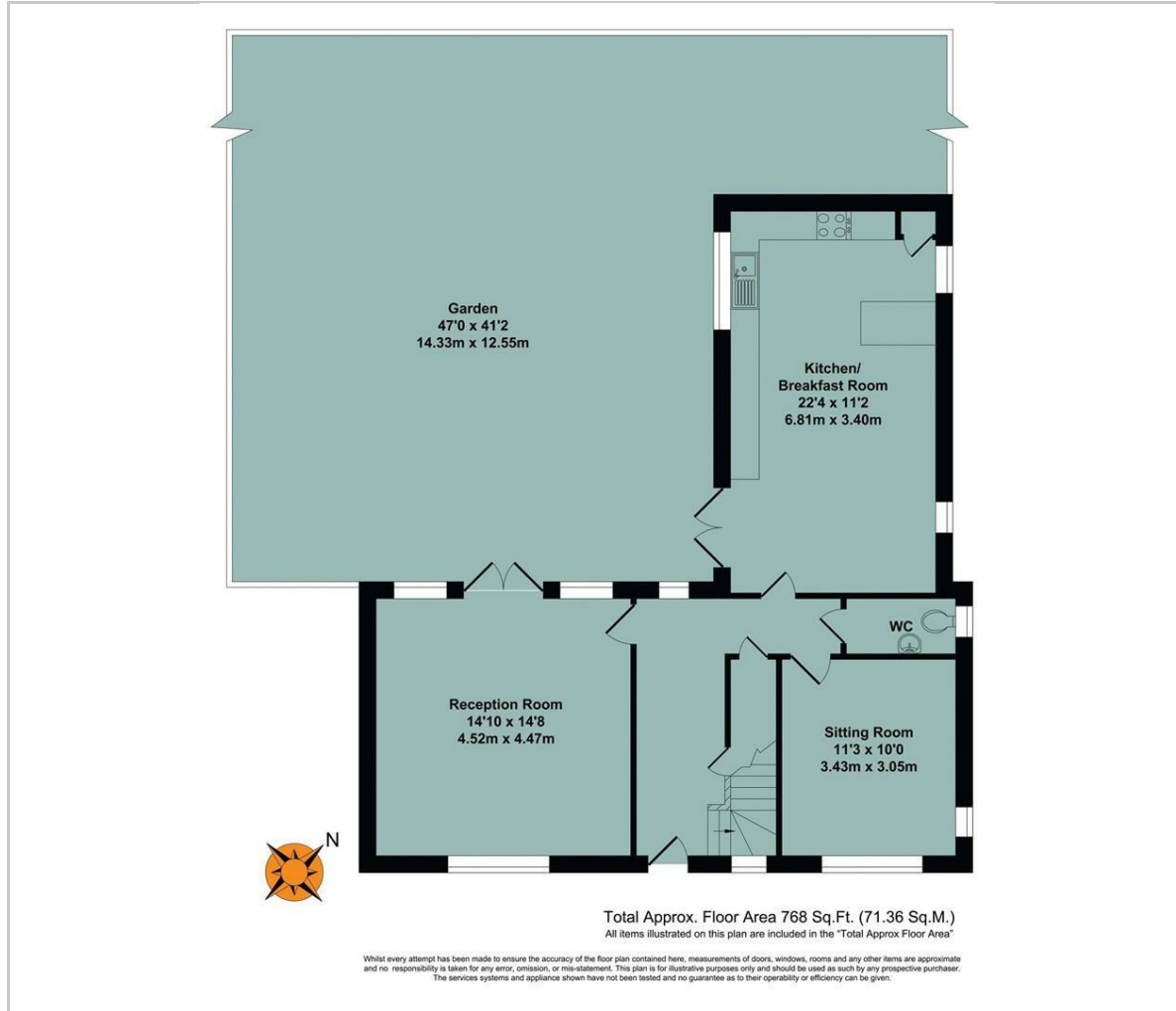


- AVAILABLE AUGUST 2026 FOR LONG TERM LET, UNFURNISHED
- FOUR DOUBLE BEDROOMS
- EN-SUITE TO MASTER
- OFF-STREET PARKING & GARAGE
- LANDSCAPED GARDEN
- FLEXIBLE RECEPTION SPACE

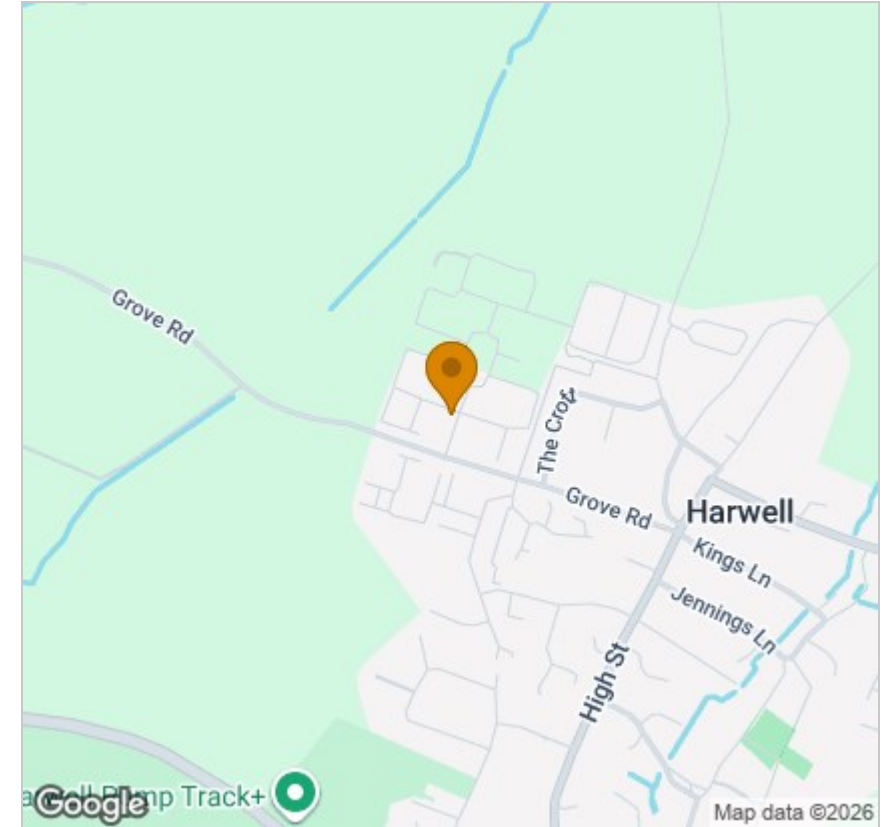


Energy Efficiency Graph

Floor Plan



Area Map



Viewing

Please contact our In House Sales & Lettings Office on 01491 839999 opt.1 if you wish to arrange a viewing appointment for this property or require further information.

These particulars, whilst believed to be accurate are set out as a general outline only for guidance and do not constitute any part of an offer or contract. Intending purchasers should not rely on them as statements of representation of fact, but must satisfy themselves by inspection or otherwise as to their accuracy. No person in this firm's employment has the authority to make or give any representation or warranty in respect of the property.

28 St Martins Street, Wallingford, Oxfordshire, OX10 0AL
Tel: 01491 839999 opt.1 Email: sales@inhouseestateagents.co.uk www.inhouseestateagents.co.uk